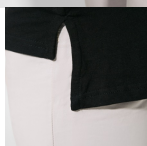


### COLLIE CA7136



#### DESCRIPTION

Short-sleeve t-shirt with extra long drop tail and elastane 2-layer crew neck. Side slits on bottom hem. The pattern of the back is slightly longer than the front.

#### COMPOSITION

100% cotton, single jersey, 155 gsm.

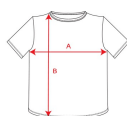
#### REMARKS

\*Removable label.

#### SIZES

Adults:: S · M · L · XL / :

#### SCHEME



#### QUANTITIES

Adults:

Box	Pack
50 un.	5 un.

#### COLORS



01



02

#### SIZES

Adults:	S	M	L	XL
WIDTH (A)	48cm	51cm	54cm	57cm
LONG (B)	76cm	79cm	82cm	85cm

\*[Measured from the edge 1 cm below the sleeves / Measured from the highest point of the shoulder to the end of the garment]

#### PRINTING TECHNIQUES AVAILABLE



Heat transfer  
printing



Handling

